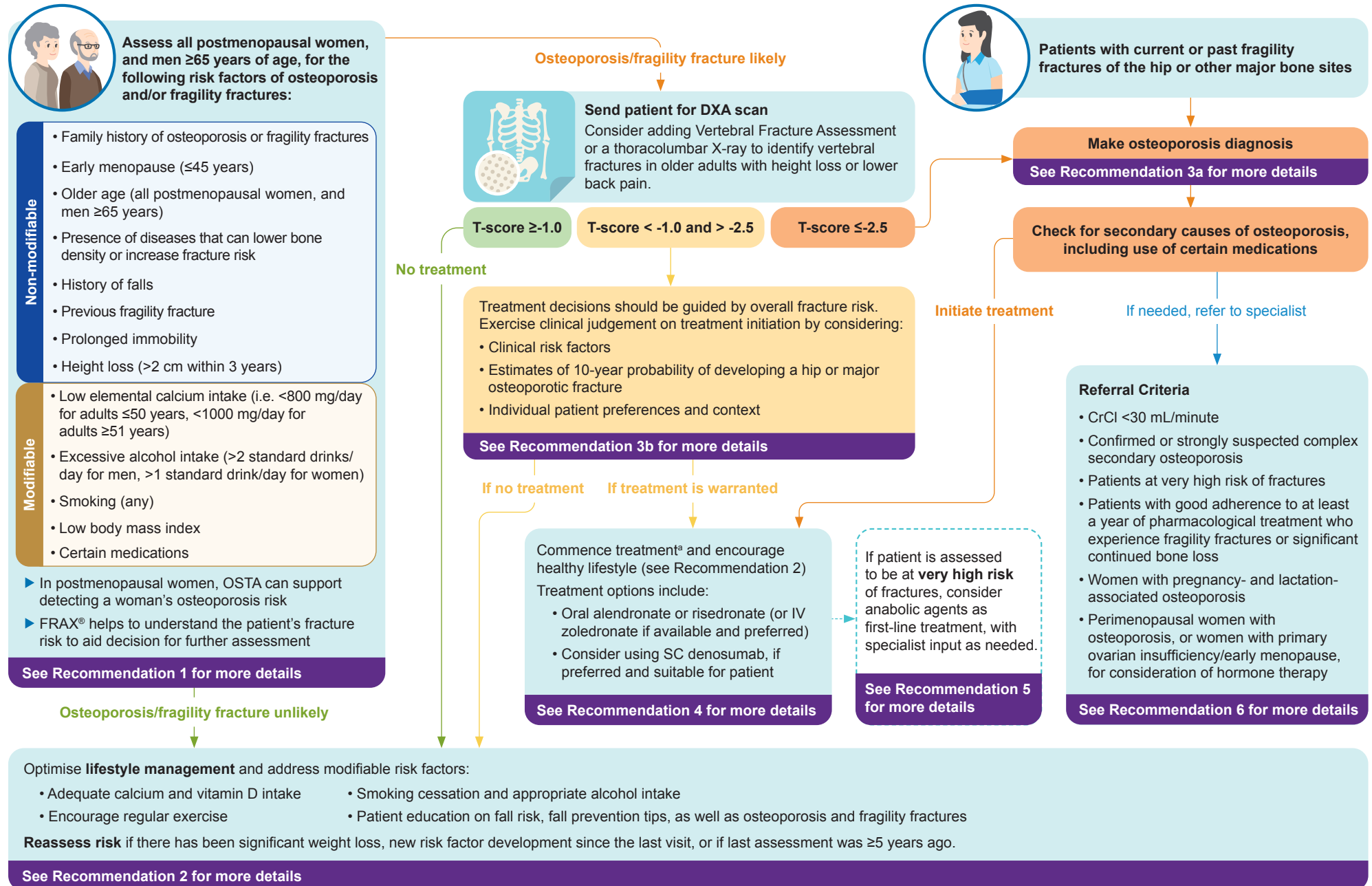


Figure 1. Overview of diagnosis and management of osteoporosis



OSTA, Osteoporosis Self-Assessment Tool for Asians; FRAX, Fracture Risk Assessment Tool; DXA, Dual-energy X-ray Absorptiometry; IV, intravenous; SC, subcutaneous; CrCl, creatinine clearance

<sup>a</sup> Treatment decision-making involves exercising clinical judgement in weighing overall risks and benefits of different management options in individual patient circumstances, and discussing with the patient (including treatment duration).